

SWING DOORS

950N2



Automated system for swing doors



EN16005

Automated systems for leaf doors

■ Open and close in absolute silence

The 950N2 automation with integrated spring allows the door to open and close in absolute silence.

■ Versatile and elegant

The Faac 950N2 automations (with integrated spring closing system) can be installed both on the lintel and directly on the structure of the door. They guarantee perfect compatibility and interchangeability with previous 950BM/BSM models.

The innovatively designed housing cover can be supplied in anodized extruded aluminium or moulded ABS making it possible to fit a (passive infrared) detection sensor inside it.

The 950N2 automated systems are also able to automate double-leaf entrances by interfacing the 2 units in a master/slave configuration and the double leaf will be operated by a single automation.

■ Safe and intelligent

The automated system features two control boards: 950MPS (control board) and 950 I/O (input / output). A microprocessor controls all the activities of the door in real time and an encoder detects its angular position. Moreover, the operating logic (automatic, manual, night, open) can be selected by means of an integrated selector.

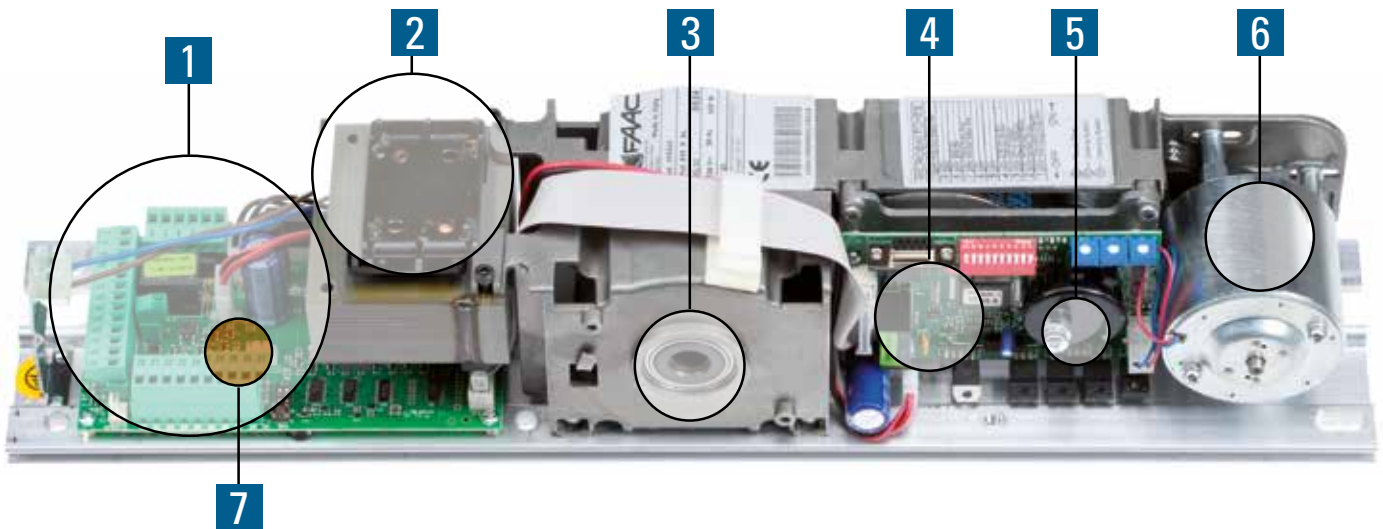
Built in conformity with the new European safety standards, speed and force are programmed according to the size of the door. If an obstacle is detected, the door re-opens immediately and as it closes, it checks, at reduced speed, that the obstacle is no longer present.

■ Powerful and reliable

Carefully selected mechanical and electrical components means that the 950N2 automation is able to move leaves weighing over 300 kg in continuous use, while always maintaining absolute operational safety.

TECHNICAL SPECIFICATIONS

Model	950N2
Power supply voltage	220-240 V~ - 50/60 Hz
Max. power	100 W
Standby power without accessories	5 W
Use frequency	100%
Motor	Motor powered at 24V $\overline{---}$
Max. accessories load	1A - 24V $\overline{---}$
Electric lock power supply voltage	(N.O./N.C.) 24 V $\overline{---}$ / 500 mA max.
Dimensions (LxDxH)	530x160x105 mm
Weight	10 kg
Operation in case of power cut	Manual push/pull opening - Spring closing
Max. leaf opening angle	100° ÷ 125°
Opening leaf time	4 - 10 s (adjustable)
Closing leaf time	4 - 10 s (adjustable)
Partial opening adjustment	10% - 90% of total opening
Pause time	0 - 30 s
Night pause time	0 ÷ 90 s
Encoder	As standard
Protection sensor monitoring (EN16005)	As standard (may be excluded)
Low energy movement (EN16005)	As standard (may be excluded)
Operating ambient temperature	-20°C ÷ +55°C
Protection class	IP 23 (for internal use only)
Compliance with regulations	EN 16005; EN 61000-6-2; EN 61000-6-3; EN 13849-1; EN13849-2



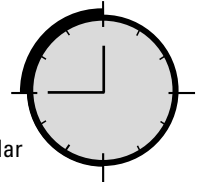
New articulated anodized aluminium arm with telescopic adjustment



New anodized aluminium shoe arm



Selectable ANTI-WIND function (ensures that the door is closed even if there is a strong wind)



Time bands can be programmed via the calendar management function (available with KP Controller keypad and display)

Automated system for swing doors



1 Control unit
950 I/O



4 Control unit
950MPS



2 Lamellar
transformer



5 Encoder



3 Return spring
with activation
arm coupling



6 DC motor

Automatic adjustments

- "Open" and "closed" position determination.
- Leaf weight and friction measurement.
- Ideal speed, acceleration and deceleration selection.
- Photocell test



7 Radio receiver
connector

Use

Modell	Leaf length (mm)	Max. leaf weight (kg)	Max. leaf weight (kg)	Max. leaf weight (kg)
		<i>Articulated push arm</i>	<i>Short shoe arm</i>	<i>Standard shoe arm</i>
950N2	700	367	286	-
	750	320	249	-
	800	281	219	-
	850	249	-	194
	900	222	-	173
	950	199	-	155
	1000	180	-	140
	1050	163	-	127
	1100	149	-	116
	1150	136	-	106
	1200	125	-	97
	1250	115	-	90
	1300	107	-	83
	1350	99	-	77
	1400	92	-	71

STANDARD FUNCTIONS

- Operating logics: AUTOMATIC - OPEN - MANUAL/NIGHT
- Self-learning of open and closed positions and measurement of the door weight
- Anti-crushing safety device active during opening and closing
- Selectable **"PUSH and GO"** function (commands opening by simply pushing the door)
- **"ANTI-WIND"** function, can be selected (ensures that the door is closed even if there is a strong wind)
- **Closing thrust to guarantee door closure even with strong wind**
- **AVS (Anti Vandal System) function: this device protects the motor if leaf movement is forced**
- Manual operation in case of an electrical power failure
- Adjustment trimmer for: opening speed, closing speed, pause time
- Designed for use with: microwave radar, passive and active infrared sensor, command push-buttons, photocells, electric locks, locks, KP Controller programming units, FAAC radio controls.

The following functions can be accessed using the KP Controller or SDK Light function keypad:

- Operating logics:
AUTOMATIC - MANUAL - OPEN – ONE WAY - NIGHT – PARTIAL OPENING
- DIAGNOSIS WITH A WIDE RANGE OF SIGNALS
- If you use the KP Controller keypad, coupled to the programming display, you can access the following functions:
- Opening and closing speed adjustment
 - Pause time adjustment
 - Opening width adjustment
 - Interlock function
 - Master-Slave function for double-leaf door
 - Acoustic or visual transit signalling devices set-up
 - Self-diagnosis.



SDK EVO Programming and functions keypad



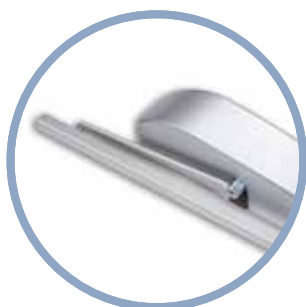
LK EVO functions selector



KS EVO KEY function selector



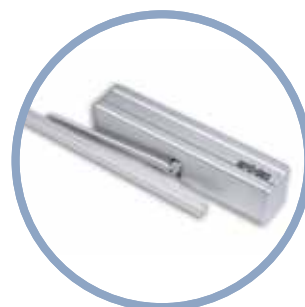
Function selector



Shoe arm



Articulated push arm



Anodized aluminium housing

Automated system for swing doors

ITEM OF SPECIFICATION 950N2

- FAAC electromechanical automation with return spring for swing doors, with DC motor
- Integrated microprocessor control unit with self-diagnosis and continuous testing of all door functions
- Can be installed both on the architrave and on the door and can open outwards or inwards
- Anodised aluminium actuation push arms and shoe type pull arms
- Grey-painted ABS or anodised extruded aluminium casing
- Anti-crushing safety device active during both opening and closing. The system not only causes the direction of travel to be reversed immediately if an obstacle is detected, but it also remembers the point at which the impact occurred and approaches it at reduced speed. It will start moving again normally only after having made sure that the obstacle has been removed
- Closing thrust to ensure the door closes even if there is strong wind. Adjustable door opening angle
- AVS (Anti Vandal System). This system protects the motor if the leaf movement is forced

Function selector integrated in the operator with the following logics:

- OPEN - AUTOMATIC - MANUAL/NIGHT
- Adjustable opening and closing speeds
- Adjustable pause time
- Selectable "Push and Go" function (commands the opening by simply pushing the door)

KP Controller and SDK-Light programmer with the following logics:

- AUTOMATIC - MANUAL - OPEN - ONE-DIRECTIONAL - NIGHT - PARTIAL OPENING
- The KP Controller keypad is designed for use with the Programming Display

Programming display - main functions:

- Programming of door operation for 5 daily and weekly time bands
- Interlock management with or without pulse memory
- Master-Slave for double leaf doors
- Display of number of cycles performed
- Fault diagnostics display
- Option of protecting the movement parameters menu with a password

Max. door length:	1,400 mm
Max. door weight:	367 kg (700 mm)
Power supply:	230 V~ - 50/60 Hz
Absorbed power:	100W



Complies with standards
UL325 and CSA CAN/
CSA - 22.2



EN16005