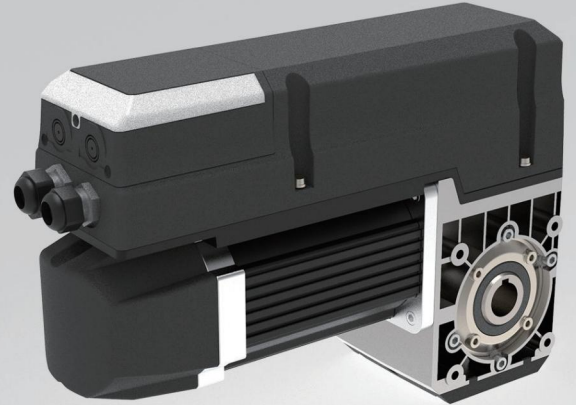


# LION 50



.AUTO ADJUSTED FORCE SYSTEM (AAFS)



.DC DRIVE



.CIRCULATION CLUTCH

## APPLICATION

- FACTORY/ WAREHOUSE INDUSTRIAL DOORS
- LOGISTICS CENTER DOORS
- COMMERCIAL CENTER/ PARKING LOT DOORS

## DOOR TYPE SUPPORTED

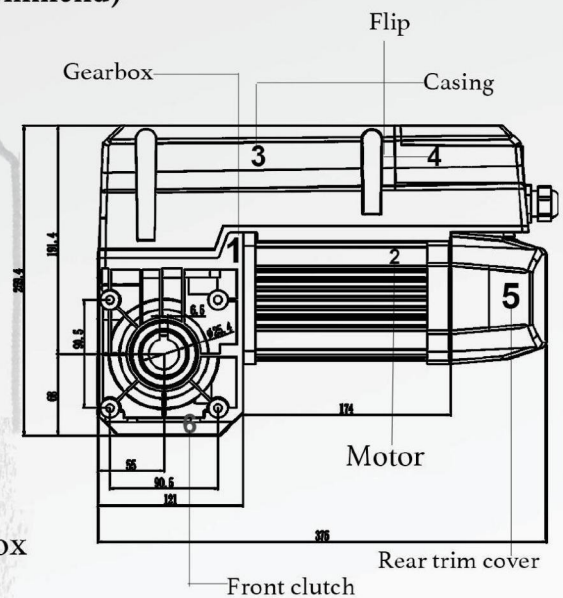
- SANDWICH INSULATED GARAGE/INDUSTRIAL DOORS
- ALU PANORAMAOR COMMERCIALINDUSTRIAL DOORS

## DOOR SIZE SUPPORTED

- UPTO 18 M2 DOOR SIZE SUPPORTED
- UPTO 234 KGS DOOR WEIGHT SUPPORTED
- UPTO 7.0M DOOR HIGH SUPPORTED

# PARAMETER LION 50

● MAXIMUM OUTPUT TORQUE	50Nm
● Rated out torque	35Nm
● Input voltage	110/220(1+10%)V 60Hz/50Hz 380V-420V
● Control system	24V DC
● Motor power	0.45Kw
● Static holding torque	400Nm
● Max. output speed	24rpm-32rpm
● Operation limit turns (limit travel)	15 turns of output shaft <b>(max. 6.5m lifting height recommend)</b>
● Sleeve shaft diameter (standard)	φ25.4mm
● Keyway size	6.3mm
● Thermal protection temperature	105°C
● Continuous sound pressure level	< 70dB
● Max. cycles per hour	20
● IP protection class	IP54
● Temperature range	- 20°C /+ 60°C
● Standard kit	Drive motor&wired control box
● Quick release with rope	Including
● Chain hoist module	Optional
● Optional sensing edge set (TX and RX)	Optional



No active closing edge protection necessary for doors up to 14m<sup>2</sup>  
Soft-Start and Soft-Stop protect the door and reduce repair costs

## Standard sectional doors with cylindrical cable drum

Door size(max.)	22m <sup>2</sup>	Door weight(max.)	286 Kg	
-----------------	------------------	-------------------	--------	---

## Vertical lift sectional doors with conical cable drum

Door size(max.)	18m <sup>2</sup>	Door weight(max.)	234Kg	
-----------------	------------------	-------------------	-------	---

## High lift sectional doors with cylindrical-conical cable drum

Door size(max.)	22m <sup>2</sup>	Door weight(max.)	286Kg	
-----------------	------------------	-------------------	-------	---